



NEWTEC OPTICAL SORTING MACHINE CELOX-P-UHD, 12 LANES

NEW GENERATION
CAMERA PLATFORM



UP TO
13 OUTLETS



SPINAFLEX SECTION

Simultaneous sorting by quality, size and shape



Advantages

- Quality, size and shape sorting in one machine
- Accurate selection of high-value products
- Consistent quality output
- No need for mechanical pre-grading
- New generation camera platform
- Newtec WebServices for capturing of complete product information and remote servicing

Application

- Potatoes



WEBSERVICES AVAILABLE
FOR REMOTE SERVICING

YOUR ADVANTAGES

- Optimal use of potatoes with unique and world leading quality sorting
- Increased throughput
- Increased operational reliability
- Low maintenance cost
- Patented technology
- Gentle product handling
- Labour cost savings
- Modular and upgradable system
- Easy access for cleaning and service
- New LED light panels
- New generation camera platform
- High colour consistency
- High resolution: 1 pixel = 0.16 mm²

NEWTEC SOFTWARE

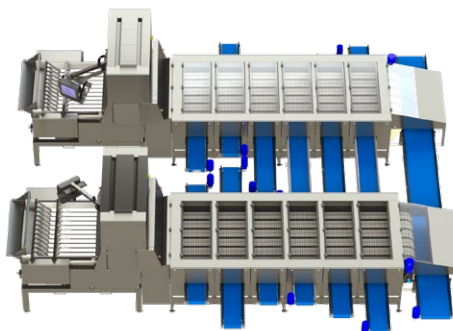
- Intuitive interface for configuring rules for sorting products by quality, size and shape
- Web-based user interface for convenient accessibility
- PLC connectivity for production line integration



CELOX-P-UHD

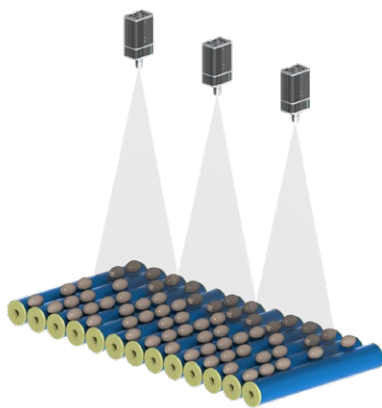
12 LANES

Outlets	Length, mm (X1*)	Length, mm (X2*)
2+1	5166	1530
3+1	5786	2150
4+1	6406	2770
5+1	7026	3390
6+1	7646	4010
7+1	8266	4630
8+1	8886	5250
9+1	9506	5870
10+1	10126	6490
11+1	10746	7110
12+1	11366	7730



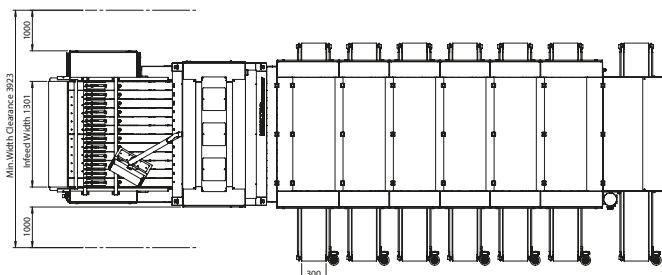
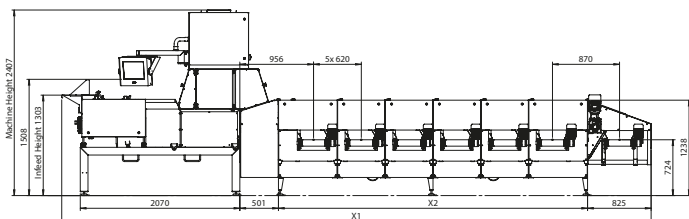
Newtec sorting solution, 2x6+1, Celox-P-UHD, 12 lanes

OPTICAL SORTING MACHINE AVAILABLE WITH 2,4, AND 12 LANES



Patented vibrating rollers with camera controlled LED lights.

*2D model of CELOX-P-UHD, 12 lanes



Capacity (12 lanes)

From 4 to approx. 30 tonnes of product/h, depending on the size of the potatoes.

- > Potatoes of 30 g: ~ 6 tonnes/hour
- > Potatoes of 80 g: ~ 14 tonnes/hour
- > Potatoes of 300 g: ~ 28 tonnes/hour

Electrical requirement

3x400V+N+PE, 13A

Environment

5°C - 40°C/41°F - 104°F

Weight

From 1200 kg - 3500 kg

Air requirement

Min. pressure

6 bar (0.6 Mpa)

Consumption

50-100 L/min.